

last name

first name

signature

| | | | | | | | | | | | | | | | | | |
|----------------------|--------------------|--------------------|--------------------|--------------------|--------------------|--------------------|--------------------|--------------------|--------------------|--------------------|--------------------|--------------------|--------------------|--------------------|--------------------|--------------------|------------------------|
| 1 1 H 1.008 | | | | | | | | | | | | | | | | | 18 2 He 4.003 |
| 3 Li 6.941 | 4 Be 9.012 | | | | | | | | | | | 5 B 10.81 | 6 C 12.01 | 7 N 14.01 | 8 O 16.00 | 9 F 19.00 | 10 Ne 20.18 |
| 11 Na 22.99 | 12 Mg 24.31 | | | | | | | | | | | 13 Al 26.98 | 14 Si 28.09 | 15 P 30.97 | 16 S 32.07 | 17 Cl 35.45 | 18 Ar 39.95 |
| 19 K 39.10 | 20 Ca 40.08 | 21 Sc 44.96 | 22 Ti 47.87 | 23 V 50.94 | 24 Cr 52.00 | 25 Mn 54.94 | 26 Fe 55.85 | 27 Co 58.93 | 28 Ni 58.69 | 29 Cu 63.55 | 30 Zn 65.38 | 31 Ga 69.72 | 32 Ge 72.64 | 33 As 74.92 | 34 Se 78.96 | 35 Br 79.90 | 36 Kr 83.80 |
| 37 Rb 85.47 | 38 Sr 87.62 | 39 Y 88.91 | 40 Zr 91.22 | 41 Nb 92.91 | 42 Mo 95.94 | 43 Tc (98) | 44 Ru 101.07 | 45 Rh 102.91 | 46 Pd 106.42 | 47 Ag 107.87 | 48 Cd 112.41 | 49 In 114.82 | 50 Sn 118.71 | 51 Sb 121.76 | 52 Te 127.60 | 53 I 126.90 | 54 Xe 131.29 |
| 55 Cs 132.91 | 56 Ba 137.33 | 57 La 138.91 | 72 Hf 178.49 | 73 Ta 180.95 | 74 W 183.84 | 75 Re 186.21 | 76 Os 190.23 | 77 Ir 192.22 | 78 Pt 195.08 | 79 Au 196.97 | 80 Hg 200.59 | 81 Tl 204.38 | 82 Pb 207.20 | 83 Bi 208.98 | 84 Po (209) | 85 At (210) | 86 Rn (222) |
| 87 Fr (223) | 88 Ra (226) | 89 Ac (227) | 104 Rf (267) | 105 Db (268) | 106 Sg (269) | 107 Bh (270) | 108 Hs (270) | 109 Mt (278) | 110 Ds (281) | 111 Rg (282) | 112 Cn (285) | 113 Nh (286) | 114 Fl (289) | 115 Mc (290) | 116 Lv (293) | 117 Ts (294) | 118 Og (294) |

| | | | | | | | | | | | | | |
|--------------------|--------------------|--------------------|-------------------|--------------------|--------------------|--------------------|--------------------|--------------------|--------------------|--------------------|--------------------|--------------------|--------------------|
| 58 Ce 140.12 | 59 Pr 140.91 | 60 Nd 144.24 | 61 Pm (145) | 62 Sm 150.36 | 63 Eu 151.96 | 64 Gd 157.25 | 65 Tb 158.93 | 66 Dy 162.50 | 67 Ho 164.93 | 68 Er 167.26 | 69 Tm 168.93 | 70 Yb 173.04 | 71 Lu 174.97 |
| 90 Th 232.04 | 91 Pa 231.04 | 92 U 238.03 | 93 Np (237) | 94 Pu (244) | 95 Am (243) | 96 Cm (247) | 97 Bk (247) | 98 Cf (251) | 99 Es (252) | 100 Fm (257) | 101 Md (258) | 102 No (259) | 103 Lr (266) |

constants

$R = 0.08206 \text{ L atm/mol K}$

$R = 8.314 \text{ J/mol K}$

$F = 96485 \text{ C/mol e}^-$

$N_A = 6.022 \times 10^{23} / \text{mol}$

$h = 6.626 \times 10^{-34} \text{ J}\cdot\text{s}$

$c = 3.00 \times 10^8 \text{ m/s}$

$g = 9.81 \text{ m/s}^2$

conversions

$1 \text{ atm} = 760 \text{ torr}$

$1 \text{ atm} = 101325 \text{ Pa}$

$1 \text{ atm} = 1.01325 \text{ bar}$

$1 \text{ bar} = 10^5 \text{ Pa}$

$^\circ\text{F} = ^\circ\text{C}(1.8) + 32$

$\text{K} = ^\circ\text{C} + 273.15$

conversions

$1 \text{ in} = 2.54 \text{ cm}$

$1 \text{ ft} = 12 \text{ in}$

$1 \text{ yd} = 3 \text{ ft}$

$1 \text{ mi} = 5280 \text{ ft}$

$1 \text{ lb} = 453.6 \text{ g}$

$1 \text{ ton} = 2000 \text{ lbs}$

$1 \text{ tonne} = 1000 \text{ kg}$

$1 \text{ gal} = 3.785 \text{ L}$

$1 \text{ gal} = 231 \text{ in}^3$

$1 \text{ gal} = 128 \text{ fl oz}$

$1 \text{ fl oz} = 29.57 \text{ mL}$

$1 \text{ J} = 1 \text{ V C}$

$1 \text{ W} = 1 \text{ J/s}$

$1 \text{ A} = 1 \text{ C/s}$

standard potentials at 25 °C E° (V)

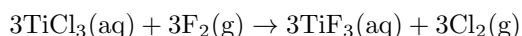
This exam should have exactly 25 questions. Each question is equally weighted at 4 points each. You will enter your answer choices on the virtual bubbleseet after you have finished. Your score is based on what you submit on the virtual bubblesheet and not what is circled on the exam.

1. You go to the hardware store to buy some root killer (copper(II) sulfate, 159.6 g/mol) and to your dismay it is all sold out. Using your electrochemistry knowledge, you decide to make some yourself. You instead buy copper piping and sulfuric acid to construct an electrolytic cell. Copper(II) sulfate is deposited on the copper electrode from a solution of sulfuric acid. What mass of copper(II) sulfate is made when 27.0 amps of current is run continuously for 17.0 hours?

- a. 308 g
- b. 672 g
- c. 22.8 g
- d. 1.76 kg
- e. 1.37 kg
- f. 1.13 kg

Explanation: The oxidation number of copper sulfate is +2, so you need to lose 2 mols of electrons per mol of copper to make Cu(II). Now use $mol = \frac{I \cdot t}{n \cdot F} = \frac{(27) \cdot (17 \cdot 60 \cdot 60)}{2 \cdot 96458} = 8.56$ mols of CuSO_4 . Use MW to convert into g and then into kg to find 1.37 kg.

2. For the following reaction of titanium(III) chloride with fluorine, what is the oxidizing agent?



- a. $\text{TiF}_3(\text{aq})$
- b. $\text{Ti}(\text{aq})$
- c. $\text{F}_2(\text{g})$
- d. $\text{Cl}_2(\text{g})$
- e. $\text{TiCl}_3(\text{aq})$

Explanation: Fluorine is being reduced from an oxidation state of 0 to a state of -1, so it is causing the chloride ion to be oxidized.

3. What is the cell potential for the following nonstandard cell?



- a. 0.901 V
- b. 0.332 V
- c. 0.622 V
- d. 1.160 V
- e. 0.771 V
- f. 0.460 V

Explanation: $E^\circ = +0.800 - -0.230 = +1.03$ V.

$$Q = \frac{1}{0.0065^2} \text{ and } n = 2$$

$$E = 1.03 - 0.05916/2 \log\left(\frac{1}{0.0065^2}\right)$$

$$E = 0.901 \text{ V}$$

4. Which of the following metals is most easily oxidized?

- a. Ag
- b. Ni
- c. Al
- d. Au
- e. Cu

Explanation: The metal that is most easily oxidized is the one with the greatest oxidation potential. The table provided shows reduction potentials for ions associated with these metals. The oxidation potential of the metal is the opposite of the standard reduction potential of the associated ions.

5. Which type of battery chemistry listed below results in a battery that is not rechargeable?

- a. alkaline
- b. Pb-acid
- c. NiCd
- d. Li-ion
- e. NiMH

explin: NiCd, Pb-acid, Li-ion, and NiMH are all examples of secondary cells (rechargeable) batteries. The only one that is a primary (non-rechargeable) battery is an alkaline cell.

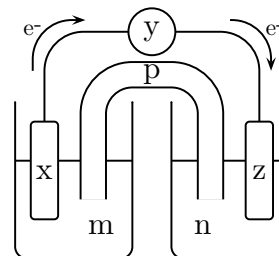
Explanation:

6. You hook up a voltmeter to a standard electrochemical cell and it reads +0.313 V. With this information, which of the following is true regarding this cell?

- a. ΔG is negative and K is greater than 1.
- b. ΔG is zero and K is equal to 1.
- c. ΔG is positive and K is greater than 1.
- d. ΔG is positive and K is less than 1.
- e. ΔG is negative and K is less than 1.

Explanation: Recall the triforme, $-nF\mathcal{E}^\circ = \Delta G^\circ = -RT\ln K$. If we measure a positive potential, this must correspond to a negative ΔG° (a spontaneous process). This must also correspond to an equilibrium constant which is greater than 1.

7. (part 1 of 2): Consider the electrochemical cell diagram shown below which is running with the electron flow direction as shown. What must be true for this electrochemical cell to run a complete closed-loop (circular) circuit without creating an imbalance of charge?



- a. anions must flow from y toward z , cations flow from y toward x
- b. anions must flow from p toward x , cations flow from y toward z
- c. anions must flow from p toward z , cations flow from p toward x
- d. anions must flow from p toward x , cations flow from p toward z
- e. anions must flow from y toward x , cations flow from y toward z

Explanation: p = salt bridge; cations will flow towards the cathode which has to be the z component due to the fact electrons are flowing towards it in the external circuit. Anions will flow to x , which is the anode compartment.

8. (part 2 of 2): Suppose the previously shown cell diagram represents an electrolytic cell. What is the role and assigned charge of the component labeled z ?

- a. cathode, negative
- b. anode, negative
- c. cathode, positive
- d. cathode, no charge
- e. anode, positive

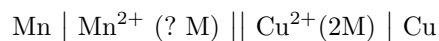
Explanation: Electrons always travel from anode to cathode. For the diagram given, the electrons travel from x (anode) to z (cathode). For an electrolytic cell, the anode is positive (x) and the cathode is negative (z).

9. Identify the oxidation number for each element in MnSO_4 . List your answer in the order Mn, S, and O.

- a. +2, +6, -2
- b. +2, +4, -6
- c. +4, +3, -1
- d. +2, +8, -2
- e. +2, +5, -2

Explanation: Oxygen has an oxidation number of -2. The polyatomic sulfate anion has an overall charge of -2, so sulfur's oxidation number be -6 in order to compensate for the four oxygen ions. The manganese is given as manganese(II) ion, so its oxidation number in considered to be +2.

10. We construct the following cell below and measure the potential to be 1.610 V. What is the concentration of Mn^{2+} ions?



- a. 0.0018 M
- b. 0.767 M
- c. 0.0073 M
- d. 0.110 M
- e. 0.256 M

Explanation: Use Nernst equation:

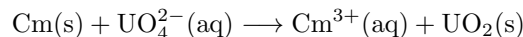
$$E = E^\circ - \frac{0.05916}{2} \log Q$$

$$E^\circ = E_{\text{cathode}}^\circ - E_{\text{anode}}^\circ = 0.340\text{V} - (-1.180\text{V}) = 1.520\text{V}$$

$$1.610 = 1.520 - \frac{0.05916}{2} \log\left(\frac{x}{2}\right)$$

Solve for $x = 0.0020 \text{ M}$

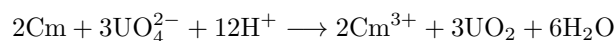
11. Consider the following redox reaction involving curium (An element whose namesake honors Marie Curie, a pioneering chemist and physicist who studied radioactivity) and the unfortunately named Uranate ion, UO_4^{2-} .



Using the smallest possible integer coefficients, balance the reaction in acidic aqueous solution. What is the coefficient for H^+ , and which side of the reaction is it on?

- a. 10, left
- b. 10, right
- c. 4, left
- d. 12, right
- e. 2, left
- f. 12, left

Explanation:



Coefficient on H^+ is 12, and is on the left.

12. What is the reducing agent in an alkaline cell?

- a. MnO_2 (s)
- b. Mn_2O_3 (s)
- c. H_2O (l)
- d. ZnO (s)
- e. Zn (s)

Explanation: The overall reaction for an alkaline cell is $2\text{MnO}_2 + \text{Zn} \longrightarrow \text{Mn}_2\text{O}_3 + \text{ZnO}$ Zn changes its oxidation state from 0 to +2 and is thus oxidized and the reducing agent is the reactant that itself undergoes oxidation. It's the reactant that "gives away" electrons.

13. In an electrolytic cell, the positive terminal is the _____ and is the site of the _____ half-reaction.

- a. cathode; oxidation
- b. anode; oxidation
- c. anode; reduction
- d. cathode; reduction

Explanation: In an electrolytic cell (analogous to charging a battery), the cathode is always attributed a negative sign and the anode a positive sign. By definition, the cathode is the site of reduction, and the anode is the site of oxidation.

14. Which of the following is true of a standard hydrogen electrode?

- I. It cannot be part of a voltaic cell since its standard reduction potential is zero.
 - II. It contains a solution with a concentration of $[H^+] = 1\text{ M}$
 - III. It uses H_2 gas at a pressure of 1 atm.
- a. I, II and III
 - b. only I
 - c. only III
 - d. only II
 - e. I and III
 - f. I and II
 - g. II and III

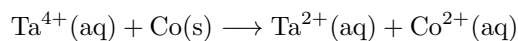
Explanation: SHE is used as a reference for all other half-reactions, and is zero by definition. That does not mean that it cannot be used in a cell. By definition, the solution must have 1 M H^+ and the H_2 pressure must be 1 atm. Thus, the correct answers are only II and III.

15. How long will it take to deposit 0.0231 moles of solid promethium (Pm, atomic number 61) by the electrolysis of $Pm(NO_3)_3(aq)$ using a current of 1.31 A?

- a. 80 minutes
- b. 75 minutes
- c. 70 minutes
- d. 85 minutes
- e. 65 minutes
- f. 60 minutes

Explanation: First note that the oxidation number of promethium is +3 in the aqueous solution given, so when it gets reduced to solid promethium, 3 moles of electrons will be transferred. Now use $t = \frac{mol \cdot n \cdot F}{I} = \frac{0.0231(3)(96485)}{1.31} = 5100\text{ s} = 85\text{ minutes}$

16. Consider the following redox reaction:



What is the reducing agent?

- a. Ta^{2+}
- b. Ta^{4+}
- c. Co
- d. Co^{2+}

Explanation: The reducing agent is the species being oxidized, which is Co(s) being oxidized to Co^{2+} .

17. Car batteries from the 1970's were able to produce about 300 cold cranking amps. Modern car batteries are able to produce well over 600 cold cranking amps. This improvement in performance is mostly due to:

- a. The design of improved electrodes with higher surface area.
- b. Batteries from the 1970's used PbO_2 as the oxidant, modern batteries now use TiO_2 .
- c. Lead from the 1970's was just lazy.
- d. The use of higher purity lead in batteries.
- e. Batteries from the 1970's used lead (II) sulfate, modern batteries now use lead (II) nitrate.

Explanation: Car batteries from the 1970's and modern car batteries operate off of the exact same electrochemical reaction. The improvement in current output is largely due to the design improved electrodes with increased surface area.

18. Consider the cell:



What is serving as the anode in this electrochemical cell?

- a. $\text{Cl}^-(\text{aq})$
- b. $\text{H}_2(\text{g})$
- c. Pt(s)
- d. $\text{H}^+(\text{aq})$
- e. $\text{Cl}_2(\text{g})$
- f. C(s)

Explanation: When using standard cell notation, the solid to the furthest left side of the notation is solid substance serving as the anode.

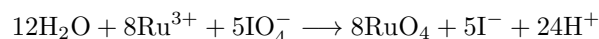
19. Balance the following redox reaction in acidic solution:



What is the coefficient of Ru^{3+} in the simplest, overall reaction?

- a. 4
- b. 8
- c. 6
- d. 1
- e. 2
- f. 5

Explanation:



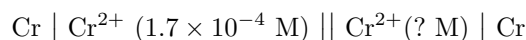
Coefficient on Ru^{3+} is 8.

20. Salts of chromate (CrO_4^{2-}) are incredibly toxic and carcinogenic because they mimic phosphate (PO_4^{3-}), which forms backbone of DNA. What is the oxidation number of Cr in chromate and P in phosphate, respectively?

- a. +5 and +6
- b. +6 and +6
- c. +6 and +5
- d. +8 and +8
- e. +5 and +5

Explanation: For CrO_4^{2-} , each oxygen is 2-, but the overall complex has a 2- charge, making the Cr 6+. For PO_4^{3-} , each oxygen is again -2, but this time the overall molecule has a 3- charge, making the P 5+.

21. The following concentration cell has a measured potential of +84.8 mV. What is the unknown chromium(II) ion concentration in this cell?



- a. 0.14 M
- b. 0.125 M
- c. $2.0 \times 10^{-6} \text{ M}$
- d. 0.075 M
- e. $3.2 \times 10^{-8} \text{ M}$
- f. 0.0023 M

Explanation: Use Nernst equation:

$$E = E^\circ - \frac{0.05916}{2} \log Q$$

$$0.0848 = 0 - (0.02958) \log\left(\frac{1.7 \times 10^{-4}}{x}\right)$$

solve for $x = 0.125 \text{ M} = [\text{Cr}^{2+}]$ in the cathode compartment

22. Which of the following species is the strongest reducing agent?

- a. Ag(s)
- b. F₂(g)
- c. Mg²⁺(aq)
- d. Cu(s)
- e. Zn(s)

Explanation: A good reducing agent needs to push electrons away which means they will be on the right side of a standard potential table and will have the most negative E° . That means that Zn is the best of those listed.

23. I put a piece of copper wire into a solution of 1 M Ag⁺. What happens?

- a. The copper ions in solution are reduced and plate onto the copper wire
- b. The copper wire reduces the Ag⁺ ions to silver metal.
- c. The two reactants will fuse together to make Zn metal.
- d. Nothing will happen.

Explanation: The standard potential for Cu(s) and Ag⁺(aq) is 0.46 V. This is spontaneous, so the copper wire will be oxidized and the silver ions will be reduced.

24. What is the standard free energy change for the following standard cell?



- a. -40.5 kJ
- b. +40.5 kJ
- c. -90.7 kJ
- d. +45.3 kJ
- e. -45.3 kJ
- f. +90.7 kJ

Explanation: We can relate the cell potential to the standard free energy change using one of the triform relationships: $-nF\mathcal{E}^\circ = \Delta G^\circ$.

Recognize that Pb is the anode and Cu is the cathode:

$$\mathcal{E}^\circ = \mathcal{E}_{\text{cathode}}^\circ - \mathcal{E}_{\text{anode}}^\circ = 0.340 \text{ V} - (-0.130 \text{ V}) = 0.470 \text{ V}$$

Rearrange the above relationship and solve for $\Delta G^\circ = -90.7 \text{ kJ}$

25. A proposed solution for grid-scale energy storage is the use of so-called 'flow batteries'. They are essentially just warehouse sized electrochemical cells! They can be charged by running the cell electrolytically, and can later be discharged by running the cell voltaically. A common cell design uses the Cr²⁺/Cr³⁺ and Fe²⁺/Fe³⁺ redox couples. What is the standard cell potential for a voltaic cell constructed using these redox couples?

- a. +1.18 V
- b. -1.18 V
- c. +0.36 V
- d. 1.68 V
- e. 0.033 V
- f. -0.36 V

Explanation: The standard reduction potentials are -0.407 V for Cr²⁺/Cr³⁺ and 0.771 for Fe²⁺/Fe³⁺. We are running a voltaic cell, so we assign the more negative potential to be the anode (Cr²⁺/Cr³⁺) and the more positive potential to be the cathode (Fe²⁺/Fe³⁺), giving us a potential of +1.18 V.

After you are finished and have all your answers circled, go to the front of the room and then use the QR code show below to pull up the virtual answer page for your exam. Enter the appropriate info plus all your answers - click the SUBMIT button. Double check your choices on the next page. Once you are sure, click the submit button on that page to enter your answers. Make sure you get the confirmation screen (different background color!) and show it to the TA or proctor. After that, turn in your exam and scratch paper. You're free to leave after that.



<https://mccord.cm.utexas.edu/iron>

* * * Remember your Version Number * * *