

last name

first name

uteid

signature

1 1 H 1.008																	2 2 He 4.003
3 Li 6.941	4 Be 9.012											5 B 10.81	6 C 12.01	7 N 14.01	8 O 16.00	9 F 19.00	10 Ne 20.18
11 Na 22.99	12 Mg 24.31											13 Al 26.98	14 Si 28.09	15 P 30.97	16 S 32.07	17 Cl 35.45	18 Ar 39.95
19 K 39.10	20 Ca 40.08	21 Sc 44.96	22 Ti 47.87	23 V 50.94	24 Cr 52.00	25 Mn 54.94	26 Fe 55.85	27 Co 58.93	28 Ni 58.69	29 Cu 63.55	30 Zn 65.38	31 Ga 69.72	32 Ge 72.64	33 As 74.92	34 Se 78.96	35 Br 79.90	36 Kr 83.80
37 Rb 85.47	38 Sr 87.62	39 Y 88.91	40 Zr 91.22	41 Nb 92.91	42 Mo 95.94	43 Tc (98)	44 Ru 101.07	45 Rh 102.91	46 Pd 106.42	47 Ag 107.87	48 Cd 112.41	49 In 114.82	50 Sn 118.71	51 Sb 121.76	52 Te 127.60	53 I 126.90	54 Xe 131.29
55 Cs 132.91	56 Ba 137.33	57 La 138.91	72 Hf 178.49	73 Ta 180.95	74 W 183.84	75 Re 186.21	76 Os 190.23	77 Ir 192.22	78 Pt 195.08	79 Au 196.97	80 Hg 200.59	81 Tl 204.38	82 Pb 207.20	83 Bi 208.98	84 Po (209)	85 At (210)	86 Rn (222)
87 Fr (223)	88 Ra (226)	89 Ac (227)	104 Rf (267)	105 Db (268)	106 Sg (269)	107 Bh (270)	108 Hs (270)	109 Mt (278)	110 Ds (281)	111 Rg (282)	112 Cn (285)	113 Nh (286)	114 Fl (289)	115 Mc (290)	116 Lv (293)	117 Ts (294)	118 Og (294)

58 Ce 140.12	59 Pr 140.91	60 Nd 144.24	61 Pm (145)	62 Sm 150.36	63 Eu 151.96	64 Gd 157.25	65 Tb 158.93	66 Dy 162.50	67 Ho 164.93	68 Er 167.26	69 Tm 168.93	70 Yb 173.04	71 Lu 174.97
90 Th 232.04	91 Pa 231.04	92 U 238.03	93 Np (237)	94 Pu (244)	95 Am (243)	96 Cm (247)	97 Bk (247)	98 Cf (251)	99 Es (252)	100 Fm (257)	101 Md (258)	102 No (259)	103 Lr (266)

constants

$R = 0.08206 \text{ L atm/mol K}$

$R = 8.314 \text{ J/mol K}$

$N_A = 6.022 \times 10^{23} / \text{mol}$

$h = 6.626 \times 10^{-34} \text{ J}\cdot\text{s}$

$c = 3.00 \times 10^8 \text{ m/s}$

$F = 96485 \text{ C/mol e}^-$

$e = 1.602 \times 10^{-19} \text{ C}$

$m_e = 9.11 \times 10^{-31} \text{ kg}$

Rydberg Constants

$\mathcal{R} = 2.18 \times 10^{-18} \text{ J}$

$\mathcal{R} = 3.29 \times 10^{15} \text{ s}^{-1}$

$\mathcal{R} = 1.097 \times 10^7 \text{ m}^{-1}$

conversions

$1 \text{ atm} = 760 \text{ torr}$

$1 \text{ atm} = 101325 \text{ Pa}$

$1 \text{ atm} = 1.01325 \text{ bar}$

$1 \text{ atm} = 14.7 \text{ psi}$

$1 \text{ bar} = 10^5 \text{ Pa}$

$1 \text{ in} = 2.54 \text{ cm}$

$1 \text{ mi} = 5280 \text{ ft}$

$1 \text{ \AA} = 10^{-10} \text{ m}$

$1 \text{ lb} = 453.6 \text{ g}$

$1 \text{ ton} = 2000 \text{ lbs}$

$1 \text{ tonne} = 1000 \text{ kg}$

$1 \text{ gal} = 3.785 \text{ L}$

$1 \text{ gal} = 231 \text{ in}^3$

$1 \text{ fl oz} = 29.57 \text{ mL}$

conversions

$1 \text{ cal} = 4.184 \text{ J}$

$1 \text{ eV} = 1.602 \times 10^{-19} \text{ J}$

$1 \text{ kWh} = 3600 \text{ J}$

water data

$C_{s,\text{ice}} = 2.09 \text{ J/g } ^\circ\text{C}$

$C_{s,\text{water}} = 4.184 \text{ J/g } ^\circ\text{C}$

$C_{s,\text{steam}} = 2.03 \text{ J/g } ^\circ\text{C}$

$\rho_{\text{water}} = 1.00 \text{ g/mL}$

$\rho_{\text{ice}} = 0.9167 \text{ g/mL}$

$\rho_{\text{seawater}} = 1.024 \text{ g/mL}$

$\Delta H_{\text{fus}} = 334 \text{ J/g}$

$\Delta H_{\text{vap}} = 2260 \text{ J/g}$

$K_w = 1.0 \times 10^{-14}$

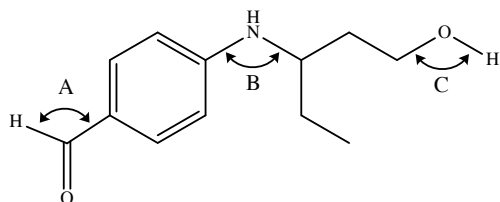
This exam should have exactly 25 questions. Each question is equally weighted at 4 points each. You will enter your answer choices on the virtual bubbleseet after you have finished. Your score is based on what you submit on the virtual bubblesheet and not what is circled on the exam.

1. One of the best properties of refrigerants (freons) used in the previous century seemed “good”. Later, we found that property to actually be somewhat “bad”. What is that property?

- a. great heat exchangers
- b. highly polar
- c. adsorbers of CO<sub>2</sub>
- d. relative inertness

**Explanation:** Inertness. They stayed in the atmosphere for years and years. This allowed them to easily reach the ozone layer and begin to react and initiate ozone depletion.

2. What are the bond angles at positions labeled A, B, and C (in that order)?



- a. 120°, 120°, 120°
- b. 107°, 109.5°, 90°
- c. 120°, 107°, 104.5°
- d. 109.5°, 120°, 178°
- e. 120°, 109.5°, 109.5°

**Explanation:** The aldehyde at position A has 3 areas of electron density and no lone pairs, creating a trigonal planar shape with bond angles of 120. The amine at position B has a core tetrahedral electronic geometry around the nitrogen, with 3 bonds and 1 (implied) lone pair. The lone pair squeezes the remaining bond angles to slightly less than 109.5 - meaning we tweak the angle down to 107. Last, the oxygen at position C has two lone pairs as well as the bonds to the carbon and hydrogen atoms. The core tetrahedral geometry is tweaked by the two lone pairs so that the final bent configuration of the C-O-H bond is a double tweak resulting in 104.5.

3. Which of the following is a reason why greenhouse gases are important to our ecosystems?

- a. The planet would be much warmer without greenhouse gases.
- b. Greenhouse gases account for the majority of our atmosphere.
- c. Greenhouse gases absorb about 99% of the total radiation from the sun.
- d. Without greenhouse gases, global temperatures would average around -15° C.

**Explanation:** Greenhouse gases make up a minuscule fraction of our atmosphere, but without them, global temperatures would be much colder.

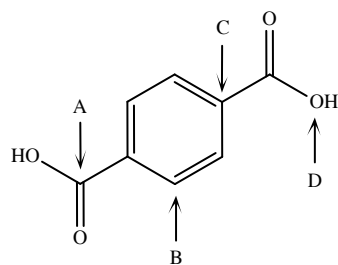
4. When comparing N<sub>2</sub> and Cl<sub>2</sub>, does N<sub>2</sub> have a longer or shorter bond length, a stronger or weaker bond, and is it more or less stable than Cl<sub>2</sub>?

- a. shorter, stronger, more stable
- b. longer, weaker, less stable
- c. shorter, stronger, less stable
- d. longer, weaker, more stable
- e. longer, stronger, more stable
- f. shorter, weaker, less stable

**Explanation:** N<sub>2</sub> has a bond order of 3, while Cl<sub>2</sub> only has a bond order of 1. Higher bond order corresponds to shorter bonds, stronger bonds, and more stable bonds.

5. Which arrow(s) is/are pointing to a central atom with a trigonal planar molecular geometry?

- a. A and B only
- b. A and C only
- c. A, B, C, and D
- d. A, B, and C only
- e. B and C only



**Explanation:** When you account for implied hydrogens where necessary, you will see that arrows A, B, and C point to trigonal planar geometries.

6. Which of the following molecules can readily absorb IR radiation?

- I. Ar
- II. O<sub>2</sub>
- III. CO<sub>2</sub>
- IV. CH<sub>2</sub>F<sub>2</sub>
- a. I, II, III, and IV
- b. III and IV
- c. I and III
- d. I, II, and IV
- e. I and IV

**Explanation:** Carbon dioxide and HFCs are greenhouse gases capable of absorbing IR radiation.

7. What is the molecular geometry of BrF<sub>5</sub>? (Hint: it has one lone pair)

- a. square planar
- b. octahedral
- c. tetrahedral
- d. square pyramid
- e. trigonal bipyramid

**Explanation:** BrF<sub>5</sub> has 5 bonds and one lone pair. This points to square pyramid geometry.

8. Which of the following is not capable of hydrogen bonding?

- a. HF
- b. H<sub>2</sub>O
- c. CH<sub>3</sub>CH<sub>2</sub>NH<sub>2</sub>
- d. CH<sub>3</sub>CH<sub>2</sub>CH<sub>2</sub>OH
- e. CH<sub>3</sub>CH<sub>2</sub>F

**Explanation:** CH<sub>3</sub>CH<sub>2</sub>F is the only option which does not have a hydrogen bound to one of the 3 most electronegative elements: N, O, F. An H bound to one of these atoms is necessary to hydrogen bond.

9. The overall energy exchange of our earth with the surrounding universe is an example of \_\_\_\_\_ .

- a. static equilibrium
- b. dynamic equilibrium
- c. electric potential
- d. the Chapman Cycle

**Explanation:** The earth has equal amounts of energy IN and OUT. But the energy is in constant flux which means there is a dynamic equilibrium constantly in play. (see notes from 10/20).

10. Catalysts have a whole set of properties. Which of the following is the MAIN thing that catalysts do for chemical reactions?

- a. stop them
- b. make them emit radiation
- c. make them reverse in direction
- d. make more limiting reactants
- e. speed them up

**Explanation:** All catalysts speed up reactions.

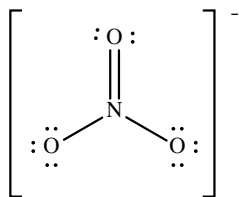
11.  $\text{SeCl}_4$  has four bonds and one lone pair. What are the electronic and molecular geometries, respectively?

- a. seesaw, trigonal bipyramidal
- b. square pyramidal, seesaw
- c. seesaw, square pyramidal
- d. trigonal planar, tetrahedral
- e. trigonal bipyramidal, seesaw

**Explanation:** A molecule with five total areas of electron density assumes a trigonal bipyramidal electronic geometry. If only one area is a lone pair, you have  $\text{AX}_4\text{E}$  which leaves 4 bonded atoms in a see-saw molecular geometry. The 1 lone pair occupies an equatorial position (allowing maximal bond angles between the lone pair and the adjacent areas of electron density)

12. What is the formal charge on nitrogen for the nitrate resonance structure shown below?

- a. +3
- b. -1
- c. 0
- d. +5
- e. +1



**Explanation:**  $\text{FC} = \text{valence electrons} - (\text{bonds} + \text{lone pair electrons})$

$$+1 = 5 - 4$$

13. Draw ozone and then determine which of the following statements is/are true.

- I. ozone has a trigonal planar electronic geometry
- II. the bond angles in ozone are approximately  $109.5^\circ$
- III. the bonds in ozone are weaker than the bond angles in diatomic oxygen
- IV. ozone has a bent molecular geometry
- a. I, III, and IV
- b. I, II, and IV
- c. I and III
- d. I and IV
- e. I, II, III, and IV

**Explanation:** The ozone molecule is a resonant structure with a bond order equal to about 1.5, which will result in weaker bonds than oxygen. The structure has a trigonal planar electronic geometry and a bent molecular geometry. The bond angles are slightly less than  $120^\circ$ .

14. Which of the following best describes the bonds in the hybrid resonance structure for nitrite,  $\text{NO}_2^-$ ?

- a. two N-O single bonds
- b. a single N-O bond and a double N-O bond resonating back and forth
- c. two N-O 1.5 bonds
- d. a single N-O bond and a double O-O bond resonating back and forth

**Explanation:**  $\text{NO}_2^-$  is a resonant structure consisting of N-O bonds that have an average 1.5 bond order.

15. What is the molecular geometry for  $\text{NBr}_3$ ?

- a. octahedral
- b. trigonal planar
- c. T-shape
- d. trigonal pyramid
- e. tetrahedral

**Explanation:** The nitrogen will have three bonds and one lone pair. This will be a trigonal pyramidal molecular geometry.

16. Why are HFCs, the newest refrigerants in use, considered unsustainable?

- a. HFCs are extremely potent greenhouse gases.
- b. HFCs are rapidly depleting the ozone layer.
- c. HFCs emit harmful UV radiation.
- d. HFCs are cooling down the ozone layer.

**Explanation:** The current concern with HFCs is that they are potent greenhouse gases, even though they do not negatively impact the ozone layer like HCFCs and CFCs.

17. What is the product of the ozone-depleting mechanism that allows one chlorine atom to destroy around 100,000 ozone molecules in the stratosphere?

- a. a chlorine radical
- b. oxygen gas
- c. ozone
- d. chlorine gas

**Explanation:** The chlorine radical is a catalyst for the depletion of ozone. It is both a reactant and a product of the ozone-depleting mechanism.

18. Carbon dioxide has a carbon-oxygen double bond. Carbon monoxide has a carbon-oxygen triple bond. Which of the following statements is true?

- a. the bonds in carbon monoxide are weaker and longer than the bonds in carbon dioxide
- b. the bonds in carbon monoxide are weaker and shorter than the bonds in carbon dioxide
- c. the bonds in carbon monoxide are stronger and longer than the bonds in carbon dioxide
- d. the bonds in carbon monoxide are stronger and shorter than the bonds in carbon dioxide

**Explanation:** A triple bond is stronger and shorter than a double bond.

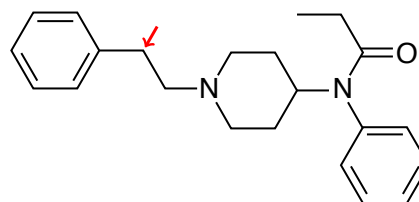
19. Chlorofluorocarbons (CFC) use as refrigerants has impacted the environment because they...

- a. rapidly cooled down the air due to their thermal properties.
- b. inadvertently caused an increase in carbon monoxide which is a toxic pollutant.
- c. provided the source of the catalyst that causes ozone depletion.
- d. depleted ozone at ground level via direct reaction.
- e. were toxic when inhaled in small quantities.

**Explanation:** CFC use has impacted the environment because they produce chlorine atoms which act as catalysts in ozone depletion.

20. (Part 1 of 4) How many carbon atoms are in this structure?

- a. 21
- b. 19
- c. 18
- d. 22
- e. 20



**Explanation:** There are 22 carbons.

21. (Part 2 of 4) That was so much fun, lets now count the hydrogens. How many hydrogens are in this structure.?

- a. 27
- b. 30
- c. 26
- d. 28
- e. 24
- f. 25

**Explanation:** There are 28 hydrogens.

22. (Part 3 of 4) There is a marked bond angle. What is the value of that bond angle?

- a.  $90^\circ$
- b.  $180^\circ$
- c.  $109.5^\circ$
- d.  $120^\circ$
- e.  $117^\circ$

**Explanation:** That is a C with 2 bonds to other C's and 2 more bonds to implied H's. That is 4 regions which means it is tetrahedral with a bond angle of  $109.5^\circ$ .

---

23. (Part 4 of 4) The structure doesn't explicitly show any lone pairs, although there are some lone pairs. How many lone pairs are on this molecule?

- a. 2
- b. 5
- c. 4
- d. 3
- e. 6

**Explanation:** Each of the two N's have 1 LP each. The O has two lone pairs. That is a total of 4 lone pairs.

---

24. Which substance listed is a polar covalent compound?

- a.  $\text{MgI}_2$
- b.  $\text{F}_2$
- c.  $\text{CH}_3\text{OH}$
- d.  $\text{H}_2$
- e.  $\text{KBr}$

**Explanation:** The only polar covalent molecule listed here is  $\text{CH}_3\text{OH}$ . The  $\text{KBr}$  and the  $\text{MgI}_2$  are both ionic compounds.

---

25. A molecule has three bonds and three lone pairs. What is the molecular geometry?

- a. octahedral
- b. T-shape
- c. trigonal planar
- d. trigonal pyramid
- e. see-saw

**Explanation:** This will be a T-shaped molecular geometry because it is  $\text{AX}_3\text{E}_3$  which is octahedral electronic geometry with 3 positions removed (lone pairs).

---

After you are finished and have all your answers circled, go to the front of the room and then use the QR code there to pull up the virtual answer page. Enter the appropriate info plus all your answers - click the SUBMIT button. Make sure you get the confirmation screen and show it to the TA or proctor. After that, turn in your exam and scratch paper. You're free to leave after that.



<https://mccord.cm.utexas.edu/helium>

\* \* \* Remember your Version Number \* \* \*